

SPECIFICATIONS

Scanning Method	Linear / Convex electronic scan	Measurement	Distance
Display Mode	B mode (single) B/B mode (double) B/M mode (4 step sweep speed selection on M mode)	Function	Circumference, Area Volume Angle Gestational weeks calculation Histogram LV calculation Tendo percent
LCD	8.4"	Interface	Video output One channel RS-232C
Range	3.5MHz 24cm, 18cm, 15cm, 12cm, 9cm, 6cm 5.0MHz / 7.5MHz / 10.0MHz 16cm, 12cm, 10cm, 8cm, 6cm, 4cm	Dimensions	Approx. 296(W) × 182(D) × 348(H) (mm)
Focusing Method	Transmitter 4-stage dynamic focus Receiver Real-time dynamic focus	Weight	Approx. 6kg
Image Adjustment	Dynamic range From 35 to 95 with 10dB step selection B-gain, M-gain 36-100dB variable by rotary encoder (1dB step) STC 4 step sliding volume on adjusted depth levels	Power Source	AC: 100V-240V 50/60Hz Battery: 12VDC (1 hr. operation, 1 hr. re-charge)
Image Processing	Frame correlation On (2-step) / off selection Line correlation On (2-step) / off selection Gray curve selection	Probes	Probes: 96ch HCS-352M: 3.5/5.0/7.0MHz 20R Convex probe HCS-3710M: 5.0/7.5/9.0MHz 10R Convex probe HLV-375M: 5.0/7.5/10.0MHz 50mm Rectal probe HLS-375M: 5.0/7.5/10.0MHz 50mm Linear probe HLS-313: 10.0MHz 30mm Linear probe HCV-3710MV: 5.0/7.5/9.0 MHz 10R Convex Probe (Cow) HLV-3212M: 1.5/2.0/3.0MHz 120mm Linear probe
Image Display	Image direction: Reverse (Left/Right), Up/Down Shift: 1cm step (max. depth 18cm) Cine Memory: 41 frames (typical) Scan angle: 1/1, 3/4, 1/2	Option	Trolley Video printer Handy LCD unit: HS-LD1 Foot switch Biopsy guide HBV-4710MV : Biopsy attachment for HCV-3710MV Stand off HWA-03 : Stand off (cassette) for HLS-375M HWA-04 : Stand off (cassette) for HLS-313 HWB-02 : Water bag for HLS-375M and HLS-313
Image Store	Flash memory (60 Images)		
Image Functions	Hospital name (40 char.) Patient name & ID No. (26 char. / 1000 patients) Age Date & Time Probe type Image direction Range		

*The specifications and appearance are subject to change without notice for improvement.
*Made in Japan

Diagnostic Scanner

Convex / Linear Ultrasonic System

HS-1500V

Our unique technology is the product of our originality and continual pursuance of achieving high quality. It is also our purpose to contribute in ways that will enhance society.



Ultrasound is harmless to animals
From veterinarians to horse owners of all breeds:
an indispensable asset



A Special Compact Unit in its Own Right



HONDA ELECTRONICS CO., LTD.

20 Oyamazuka, Oiwa-cho, Toyohashi
Aichi Prefecture, 441-3193 Japan
TEL: +81-532-41-2515 FAX: +81-532-41-4441
URL: <http://www.honda-el.co.jp/>
Registered company for ISO 9001/ ISO13485



A Special Compact Unit In Its Own Right

Advanced technology and excellent image embodied in a chic unit

Diagnostic Scanner

Convex / Linear Ultrasonic System

The HS-1500V

Ultrasound is considered as a useful routine examination within several segments of the veterinary market.

Important information can be obtained in an easy and cost effective way.

The HS-1500V, developed by Honda Electronics, is a compact, lightweight, ultrasonic system designed for practices that involve small or large animals, or a combination of both.

High resolution 8.4" wide LCD and advanced technology are embodied in this portable scanner which can be carried by hand.

Diagnosis can be conducted anywhere, and a wide range of probes (including those for abdominal, cardiac, and reproduction) can be utilized for a variety of clinical procedures.

1 Height resolution : 8.4" wide LCD

Height image quality
Maximum brightness: 450cd/mm
Viewing angle : ±55° (Right and Left side)
40° (Up side)
10° (Down side)



2 Portability and Lightweight

Dimensions : 296 mm(W) x 182 mm(D) x 348 mm (H)
Weight : Approx. 6kg



3 Simple Operation

You can enter desired function with the F1-F9 keys. The trackball can be removed by hand for cleaning. Output connectors are located in the front panel.



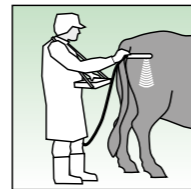
4 Two power source: AC & Battery

It also operates on a 12V Ni-MH battery which recharges by itself. The battery can be easily replaced.



5 Useful Option

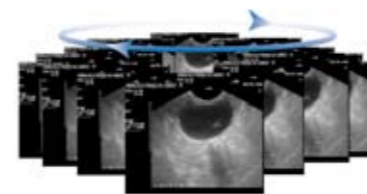
Handy LCD unit with Freeze and Stored keys.



HS-LD1

6 Cine-loop Function

This function immediately plays back ultrasound images frame-by-frame. And past images can be replayed, allowing just the right frame to be selected and saved. Occasionally it is difficult to capture a still image at just the exact moment.



9 Mix practice and probes

Small animals

Dog

Gestational Sac Diameter
Crown Rump Length (less than 40 days)

Head Diameter
Body Diameter (more than 40 days)

Cat

Head Diameter
Body Diameter (more than 40 days)



Mix practice

Small animals
Large animals



Large animals

Equine

Sac Diameter
Concepts Diameter

Sheep

Trunk Diameter
Head Diameter

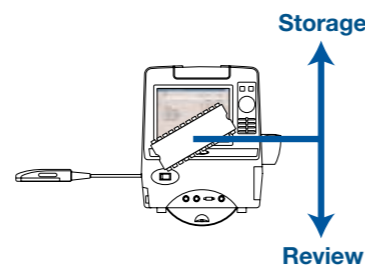
Cattle

Trunk Diameter
Head Length
Head Diameter
Crown Rump Length



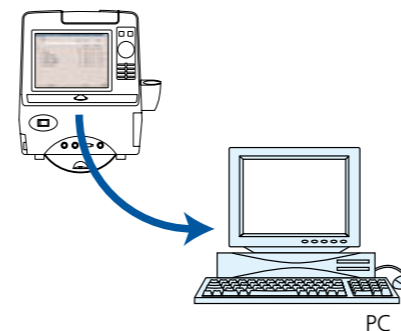
7 Image Storage × 60 images

Flash memory image storage. Built-in flash memory can keep the US images in the field. Diagnose anywhere and make prints at the clinic.



8 Stored Images (JPEG) Transfer

Image Utility Program transfers the clinical images stored in the memory to a PC.



Probes



HCS-3710M
Multi Frequency
Microconvex probe (10R)
5.0-7.5-9.0 MHz



HCS-352M
Multi Frequency
Microconvex probe (20R)
3.5-5.0-7.0 MHz



HCS-375M
Multi Frequency
Linear probe (50mm)
5.0-7.5-10.0 MHz



HLS-313
High Frequency
Linear probe (30mm)
10.0 MHz



HLV-375M
Multi Frequency
Rectal probe
5.0-7.5-10.0 MHz

Ultrasound is harmless to animals

From veterinarians to horse owners of all breeds:
an indispensable asset



A Special Compact Unit in its Own Right