

# Diagnostic Scanner

Convex / Linear Ultrasonic System

# HS-2000

Our unique technology is the product of our originality and continual pursuance of achieving high quality. It is also our purpose to contribute in ways that will enhance society.



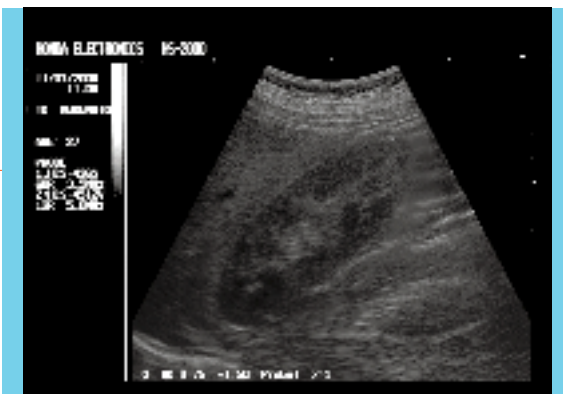
# A Choice You Won't Regret : The HS-2000

- advanced technology and excellent image embodied in a chic unit -

**C**an your personal ultrasound system compete with today's demand for accurate medical diagnosis?  
And are you satisfied with its performance when employing various medical applications?  
If not, then Honda Electronics had just the solution for you : the new HS-2000, a compact yet attractive unit featuring outstanding technology that will enable the user to fulfill the present and future requirements for patient diagnosis.

THE HS-2000 CONVEX / LINEAR DIAGNOSTIC SCANNER FEATURES ARE;

1. Excellent image by advanced Technology
2. Compact high class technology
3. Fine operation on a large keyboard
4. Multi-frequency probes
5. 9-inch monitor
6. Two probe connector
7. Image Storage by Flash Memory
8. Various software



1.

## Excellent Image

Why the image quality is state of the art?  
Higher class technology is housed.

- Dynamic focusing
- Multi frequency probes

2.

## Compact

Why is it so small and light?  
Utilized LSI technology and shrunk the size of the circuit.  
Suitable for hand-carry and use in the practice/field.

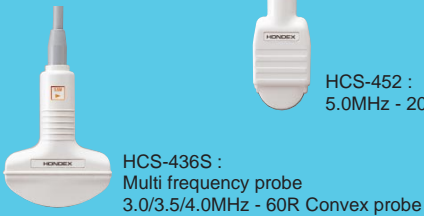
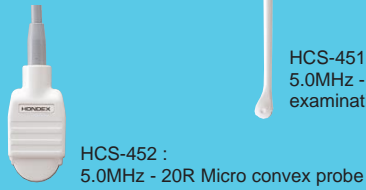
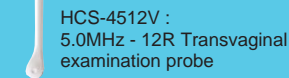
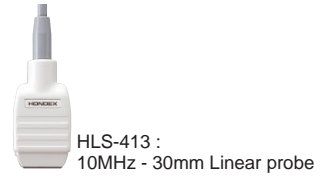
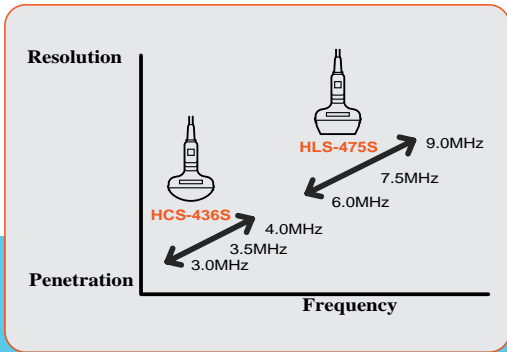
3.

## Fine Operation

What accounts for a good interface?  
User can control the functions with one touch key stroke.  
Keys, Knobs and Trackball must be positioned for effortless operation.

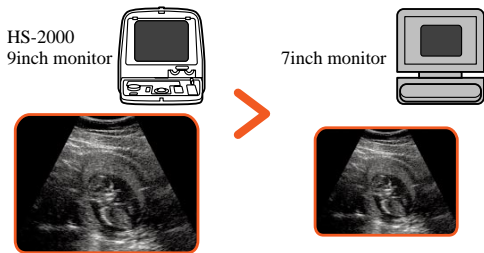


## 4. Multi-Frequency Probes



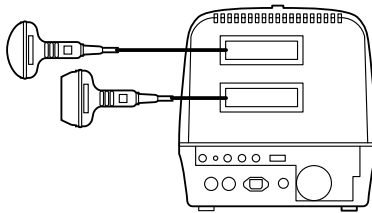
## 5. 9-inch Monitor

Highresolution B/W CRT 256 grayscale in a compact package



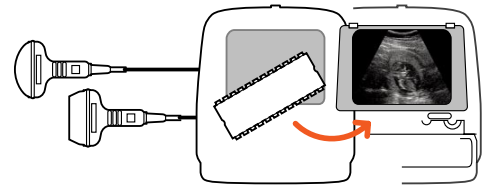
## 6. Two Probe Connector

Two probes can be connected to the unit at one time.



## 7. Image Storage x 15-images

Flash memory image storage  
Built-in flash memory can keep the US images in the field.  
Diagnose anywhere and make prints at the clinic.



Menu

## 8. Various Software

Gestational week calculation : 16 formulas  
Cardiac Measurement



RS232C Connector



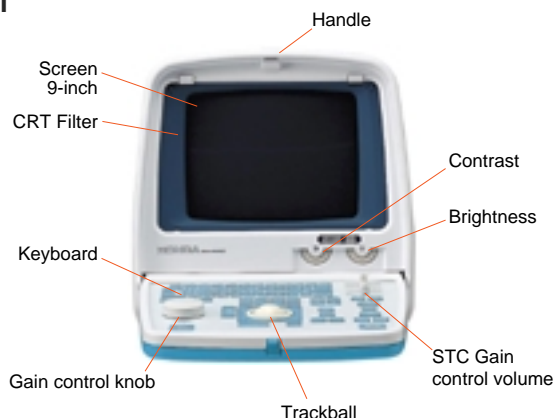
Two probe connector



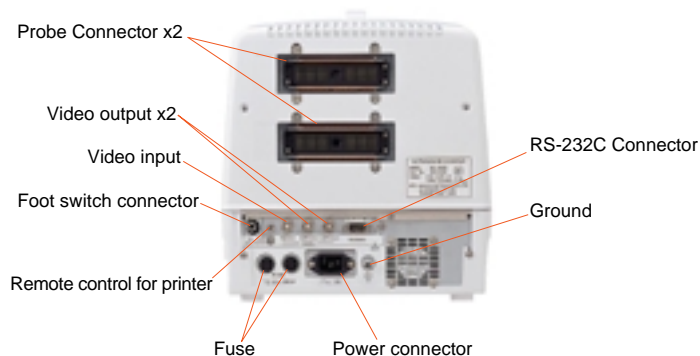
Probe pocket

# PANEL

## FRONT



## REAR



## SPECIFICATIONS

<b>Scanning Method</b>	Linear / Convex electronic scan
<b>Display Mode</b>	B mode (single) B/B mode (double) B/M mode (4 step sweep speed selection on M mode)
<b>Monitor</b>	9 inch B/W monitor 256 greyscale
<b>Range</b>	3.5MHz 24cm(x 0.75), 18cm(x 1.0), 12cm(x 1.5), 9cm(x 2.0) 5.0MHz/7.5MHz 16cm(x 0.75), 12cm(x 1.0), 8cm(x 1.5), 6cm(x 2.0)
<b>Focusing Method</b>	Transmitter 4-stage dynamic focus Receiver Real-time dynamic focus
<b>Image Adjustment</b>	Dynamic range From 35 to 95 with 10dB step selection B-gain, M-gain 36~100dB variable by rotary encorder (1dB step) STC 6 step sliding volume on adjusted depth levels
<b>Image Processing</b>	Frame correlation On (2-step) / off selection Line correlation On (2-step) / off selection Gray curve selection
<b>Image Display</b>	Image direction Reverse (Left/Right), Up/Down Shift 1cm step
<b>Image Store</b>	Flash memory (15 Images)
<b>Image Functions</b>	Hospital name (32 char.) Patient name & ID No.(26 char.) Age Date & Time Probe type Image direction Range

<b>Measurement Function</b>	Distance Circumference, Area Volume Angle Gestational weeks calculation
<b>Interface</b>	Video output Two channel Video input One channel
<b>Dimensions</b>	Approx. 298(W) x 380(D) x 300(H) (keyboard closed) (mm) 298(W) x 580(D) x 300(H) (keyboard open)
<b>Weight</b>	Approx. 12kg
<b>Power Source</b>	100V-240V AC 50/60Hz
<b>Standard Probe</b>	HCS-436S : 3.0/3.5/4.0MHz 60R Convex probe
<b>Probe Connector</b>	2 (selected by keyboard)
<b>Option</b>	Probes : 96ch HCS-436M : 3.0/3.5/5.0MHz 60R Convex probe HCS-452 : 5.0MHz 20R Micro convex probe HCS-454 : 5.0MHz 40R Convex probe HCS-4512V : 5.0MHz 12R Transvaginal examination probe HLS-438 : 3.5MHz 80mm Linear probe HLS-455 : 5.0MHz 50mm Linear probe HLS-475 : 7.5MHz 50mm Linear probe HLS-475S : 6.0/7.5/9.0MHz 50mm Linear probe HLS-413 : 10MHz 30mm Linear probe HLS-455R : 5.0MHz 50mm Transrectal probe

Others  
Video printer  
Foot switch  
Biopsy Guide  
Trolley  
External Monitor

- The specifications and appearance are subject to change without notice for improvement.
- Made in Japan



## HONDA ELECTRONICS CO.,LTD.

20 Oyamazuka, Oiwa-cho, Toyohashi  
Aichi Prefecture, 441-3193 Japan  
TEL : +81-532-41-2514 FAX: +81-532-41-4441  
URL : <http://www.honda-el.co.jp/index.html>  
Registered company for ISO 9001 and EN 46001